



# MACHINING CENTER WITH THE TURNTABLE RING AND THE CENTRAL COLUMN - **MRICC-01**

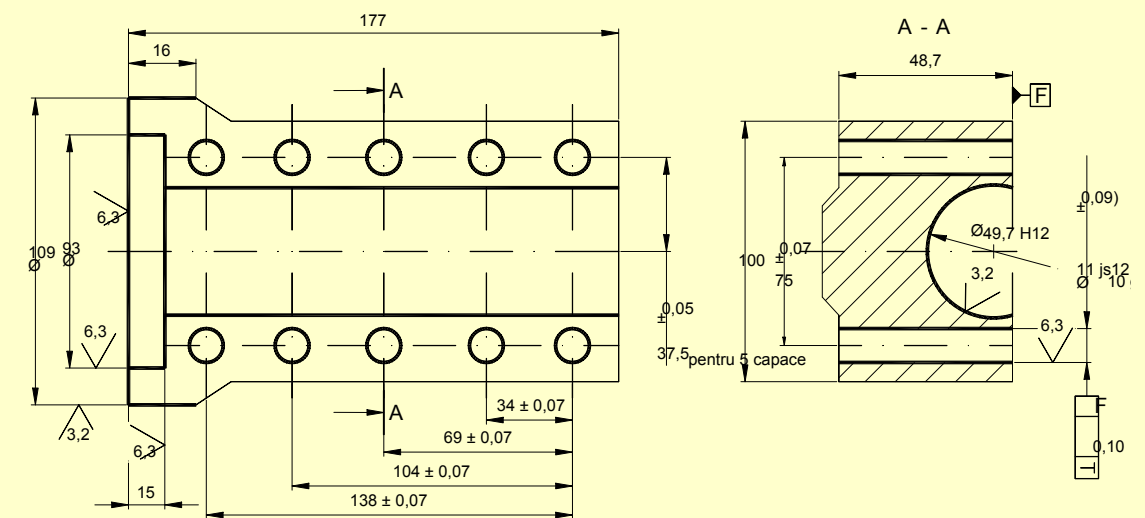


## MRICC-01

- machining center is equipped with 8 axes CNC and consists of:
- Table frame ring,
  - Indexing turntable ring, with 6 HIRTH ring, operated electro-hydraulic and hydraulic locking,
  - 6 workstations; 1 post for loading - unloading workpieces and 5 units, with adjustable electromechanical feed,
  - cooling system and lubrication tools,
  - centralized lubrication plant,
  - Hydraulic unit,
  - Electrical system - SIEMENS 840D CNC,

### Main Technical Data

- |                             |                        |
|-----------------------------|------------------------|
| - Precision Indexing        | $\pm 6''$              |
| - Axis positioning accuracy | $\pm 0.020 \text{ mm}$ |
| - Rapid traverse speed      | 10 m/min               |
| - Feed rate (adjustable)    | 50 ... 1000 mm/min     |
| - Spindle speed             | 400 ÷ 1400 rpm         |
| - Power requirements        | 119 kW                 |
| - Dimensions (L x W x H)    | 5700x3500x3500 mm      |
| - Weight                    | 18500 kg               |



EXAMPLE WORKPIECE

**SC Advanced Technologies Trade SRL**

**Address:** Calea Cringasi, No 36, Block No.13, Stairs 2, 1st Floor, Ap. 60, District 6,  
Bucharest - Romania, **Mobile :** +40 72 6387625,  
**Mail :** lg@advtech.ro, office@advtech.ro, **Web :** www.advtech.ro